

PART OF THE NW 1/4, OF SEC. 17, T.5N., R.1W., S.L.B. & M.  
TERRACE PINES CONDOMINIUMS PHASE 2

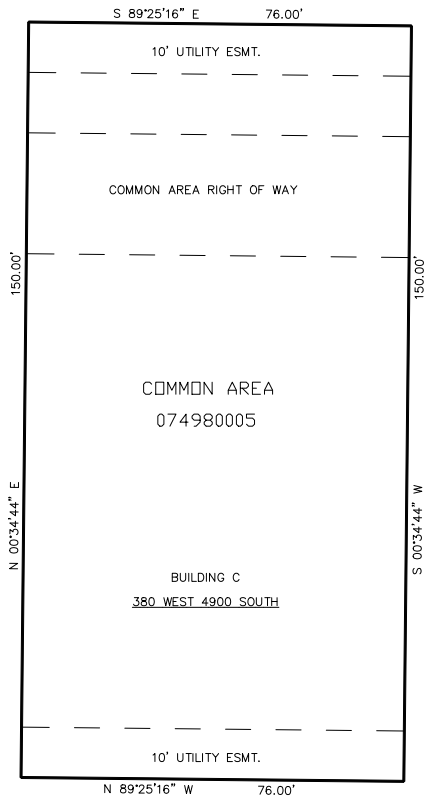
IN WASHINGTON TERRACE  
SCALE 1" = 20'

TAXING UNIT: 24

SEE PAGE 67

SEE PAGE 480

SEE PAGE 489



4900 SOUTH STREET

SEE PAGE 67

BLDG.	UNIT	SERIAL #	OWNERSHIP
C	9	074980001	KATHLEEN B FINCH & KARL DAVID FINCH
	10	074980002	THE GORDON J NUTT AKA FAMILY TRUST SEPTEMBER 8, 1995
	11	074980003	DEVIN L SHIPP
	12	074980004	LARRY DEE MORRISON

\* ESMT. NOT VACATED FROM TERRACE PINES SUB.  
BOOK 40, PAGE 89 ON NORTH AND SOUTH 10 FT.

FOR COMPLETE ENG DATA SEE  
ORIGINAL DEDICATION PLAT IN  
BOOK 43, PAGE 63 OF RECORDS.